

LED21PR - CHELSEAS RECESSED

RECESSED MINI PATTERN & FRAMING PROJECTOR

MANUFACTURED IN THE UNITED STATES - IBEW



PRODUCT LISTED
BY A NATIONALLY
RECOGNIZED
TESTING
LABORATORY



The Chelsea Recessed is a compact framing and gobo projector. Producing a crisp beam of light, it is perfect for illuminating artwork or projecting a pattern. The unit is attached to a pantograph, which allows for a wide aiming range. A wide range of dimming, color and voltage options are available.

FEATURES

- 100-277 Volt available
- 50,000 hour lamp life
- Framing shutters included
- Stock or custom, steel or glass patterns
- Dimmable (optional)
- Numerous accessories available
- Pantagraph allows for wide range of aiming angles.

CONSTRUCTION

- Aluminum and steel pattern and framing projector with black, white or silver finish
- Accessory slot for color glass
- Internal framing shutters
- Accepts Z-size glass or metal gobo
- Accepts up to 2 accessories

LED SPECIFICATIONS

- Color Temperature: 3200K
- CRI: 90
- No UV or IR

OPTICS

- 19°, 26°, 36° and 50° Lens Tube available

ELECTRICAL

- 21 watt power consumption
- Integral electronic driver
- Meets FCC 47 CFR Part 15/18 Requirements

OPTICS

- Available as black, white or custom color.

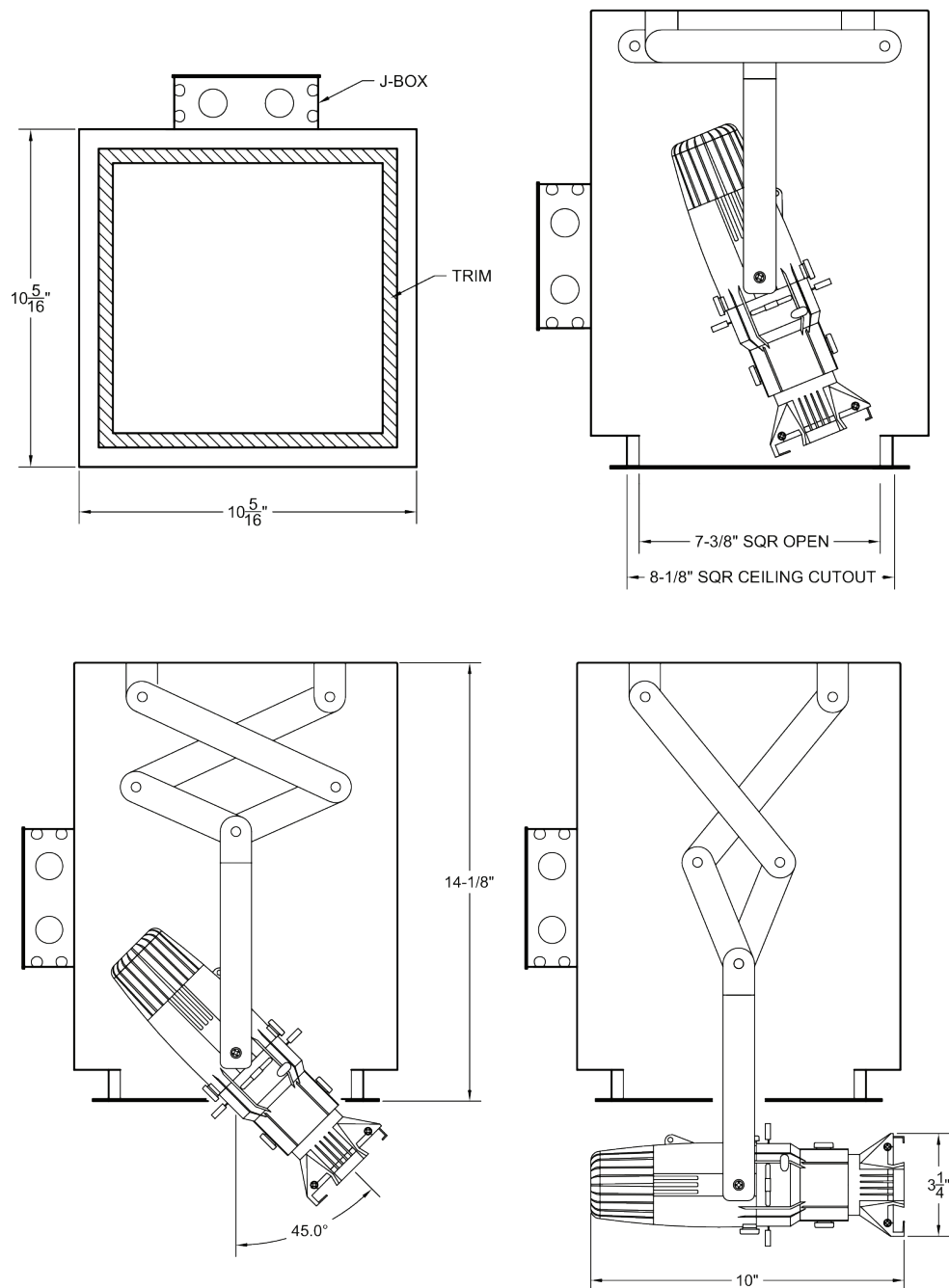
LED21PR - CHELSEAS RECESSED

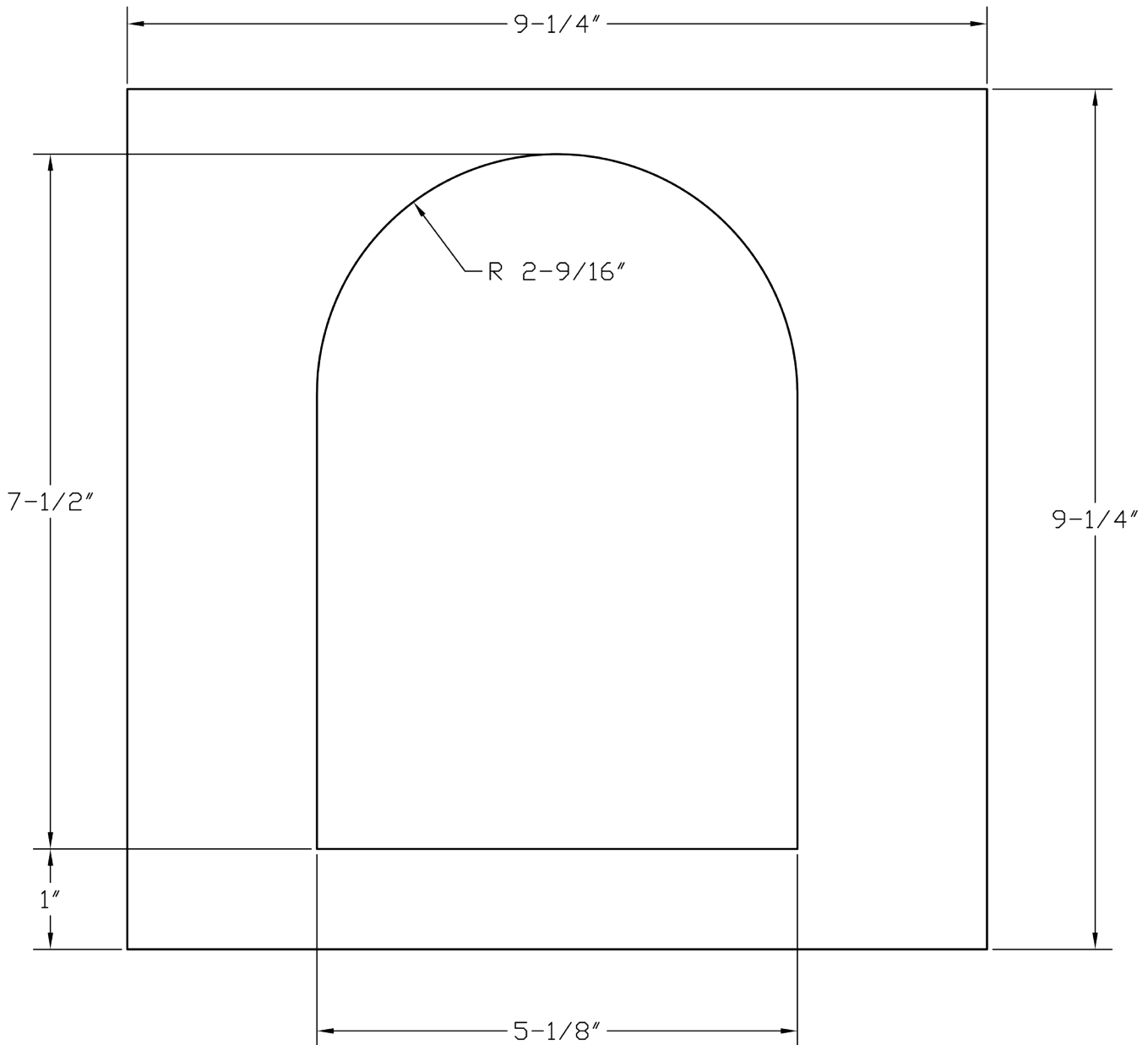
RECESSED MINI PATTERN & FRAMING PROJECTOR

MANUFACTURED IN THE UNITED STATES - IBEW



PRODUCT LISTED
BY A NATIONALLY
RECOGNIZED
TESTING
LABORATORY





LED21PR - CHELSEAS RECESSED

RECESSED MINI PATTERN & FRAMING PROJECTOR

MANUFACTURED IN THE UNITED STATES - IBEW

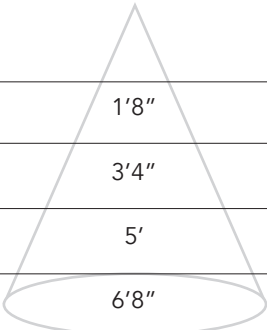


PRODUCT LISTED
BY A NATIONALLY
RECOGNIZED
TESTING
LABORATORY

PHOTOMETRIC DATA

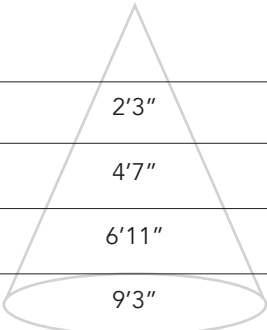
19° Lens Tube

Distance	Beam Spread	Footcandles
5'	1'8"	412
10'	3'4"	103
15'	5'	46
20'	6'8"	26



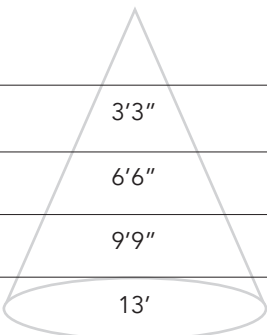
26° Lens Tube

Distance	Beam Spread	Footcandles
5'	2'3"	224
10'	4'7"	56
15'	6'11"	25
20'	9'3"	14



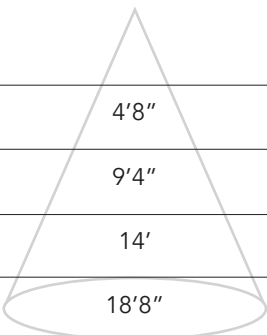
36° Lens Tube

Distance	Beam Spread	Footcandles
5'	3'3"	120
10'	6'6"	30
15'	9'9"	13
20'	13'	8



26° Lens Tube

Distance	Beam Spread	Footcandles
5'	4'8"	67
10'	9'4"	30
15'	14'	17
20'	18'8"	11



ACCESSORIES

SP1	Stock Pattern Steel
CP1	Custom Steel Pattern
PH2	Pattern Holder
4MCF	Color Frame
4MTH	Top Hat
4MTHS	Top Hat Short
4MHH	Half Hat
4MHHS	Half Hat Short
4MDN	Donut

PATTERNS

For standard and custom patterns, see the pattern specification sheet. QR Code is provided below.



NOTES ON DIMMING

Visit tslight.com/resources or scan the QR Code.



LED21PR - CHELSEAS RECESSED

RECESSED MINI PATTERN & FRAMING PROJECTOR

MANUFACTURED IN THE UNITED STATES - IBEW



PRODUCT LISTED
BY A NATIONALLY
RECOGNIZED
TESTING
LABORATORY

SPECIFY:

MODEL		INSIDE FINISH	TRIM FINISH	FIXTURE FINISH
LED21PR		B = Black W = White	B = Black W = White	B = Black W = White
VOLTAGE	OPTICS		DIMMING †	ACCESSORIES
120 277	19 = 19° 26 = 26° 36 = 36° 50 = 50°		TE = Trailing Edge (120V Only) LE = Leading Edge (120V Only) ND = Non-Dimming 010 = 0-10V DMX = DMX Basic	See Accessory Options for Ordering Codes.

Maximum Ambient Temperature: 35°C
Maximum Operating Angle: 45° from vertical

† See "Notes on Dimming"

ORDERING INFORMATION

PROJECT:	
LOCATION:	
QUANTITY:	
CONTACT:	
PHONE:	
EMAIL:	

EXAMPLE: LED21PR-B-2-B-120-19-010

MODEL	INSIDE FINISH	TRIM FINISH	FIXTURE FINISH	VOLTAGE	OPTICS	DIMMING	ACCESSORIES